

**2014 TCTAP**

Wrap-Up Interview

# STEMI Intervention

**Moderator**

**Stephen G. Ellis**

**Interviewees**

**Bernard Chevalier, Cindy L. Grines, Neal S. Kleiman**

# Issues in Brief

## **Thrombus Aspiration**

### **Guideline Today**

- ACCF/AHA, ESC

### **Clinical Studies**

- TAPAS & TASTE Trial
- Discussion

## **Multivessel PCI**

### **Guideline Today**

- ACCF/AHA, ESC

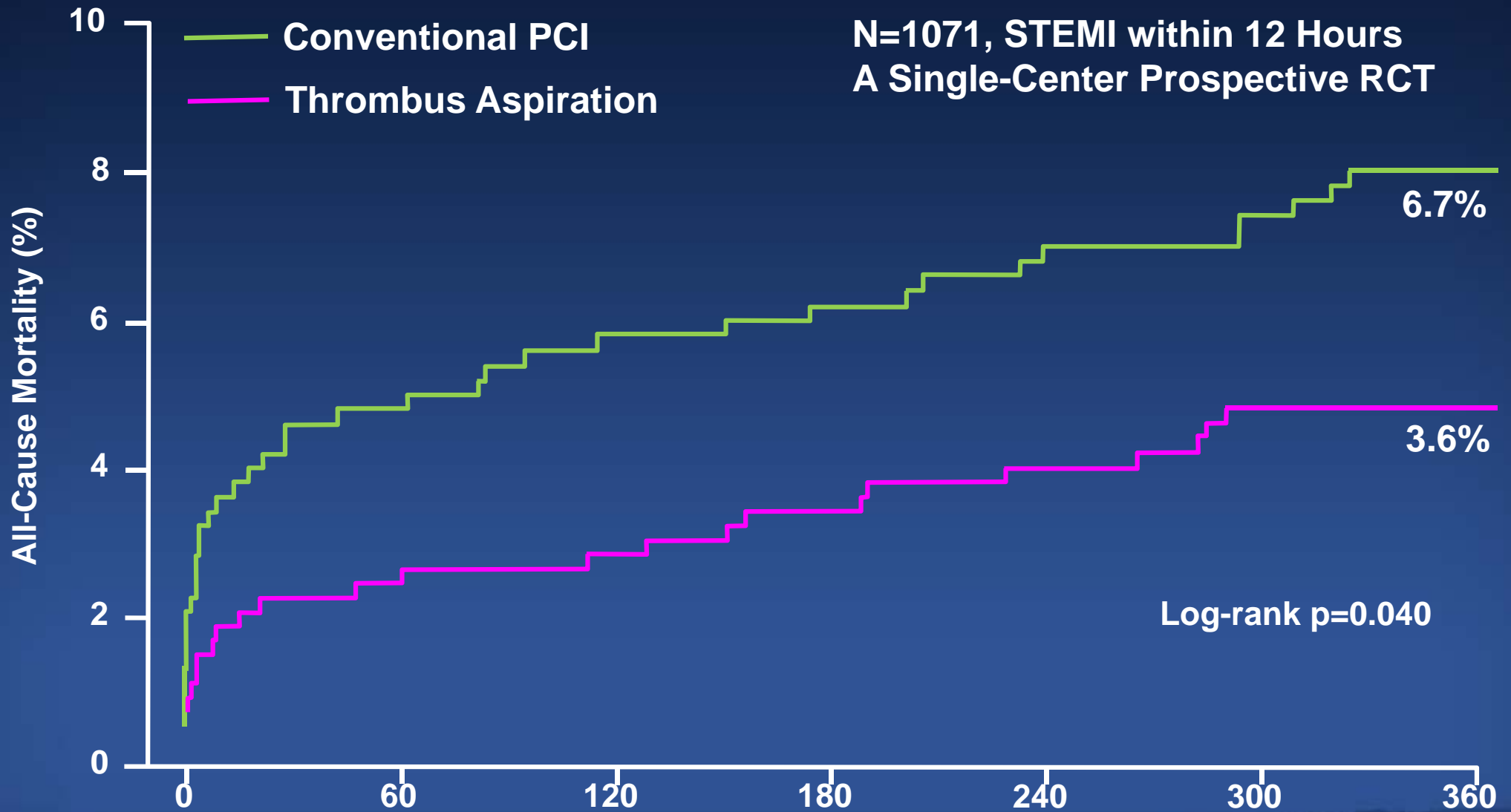
### **Clinical Studies**

- Registry Data & PRAMI Trial
- Discussion

# Thrombus Aspiration

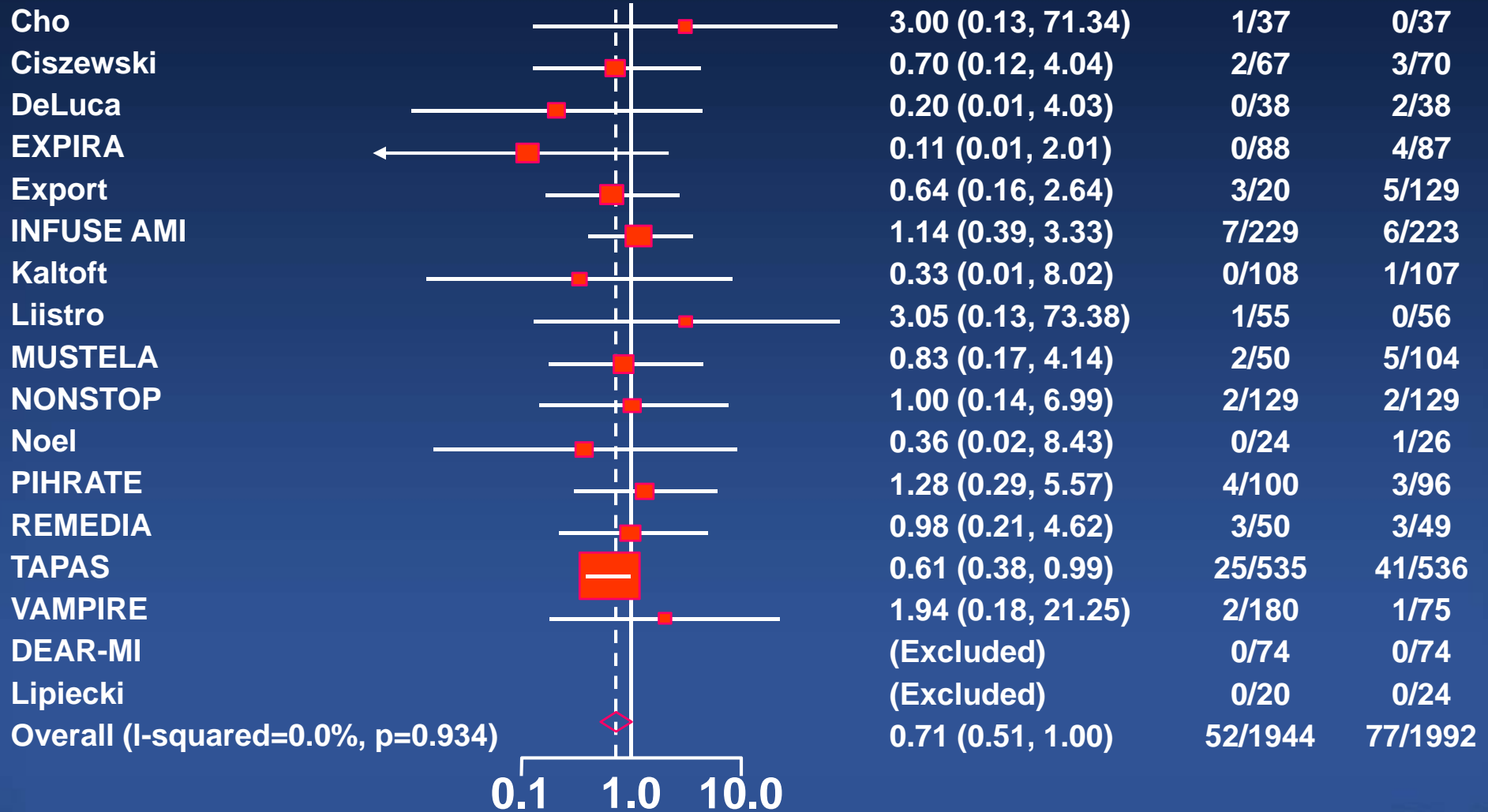
- **2013 ACCF/AHA Guideline**
  - **Manual Thrombus Aspiration (IIaB)**
- **2013 ESC Guideline**
  - **Routine Thrombus Aspiration (IIaB)**

# TAPAS Trial

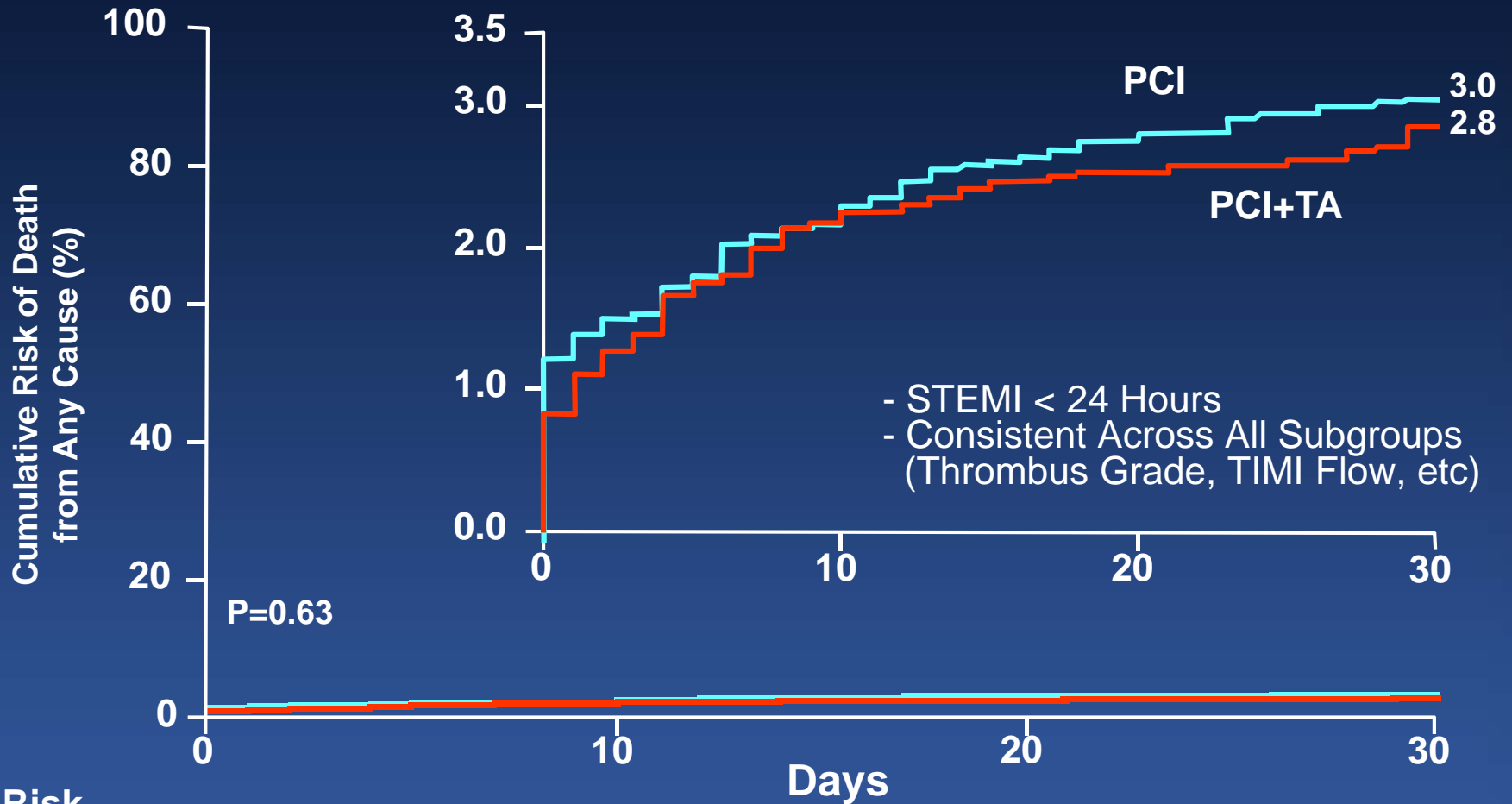


# Metaanalysis

## All-Cause Mortality



# TASTE Trial



## No. at Risk

	0	10	20	30
PCI+TA	3621	3568	3540	3532
PCI	3623	3567	3545	3530

# Discussion

- **Thrombus Aspiration in STEMI**
  - **TASTE Trial: Disappointing Results**
  - **Ongoing Trial: TOTAL Trial (n=10,700; NCT01149044)**
  - **Interpretation**
- **Multivessel PCI in STEMI**
  - **PRAMI Trial: Promising Results**
  - **Ongoing Trial: CULPRIT-SHOCK, COMPLETE Trials**
  - **Interpretation**

# Multivessel PCI

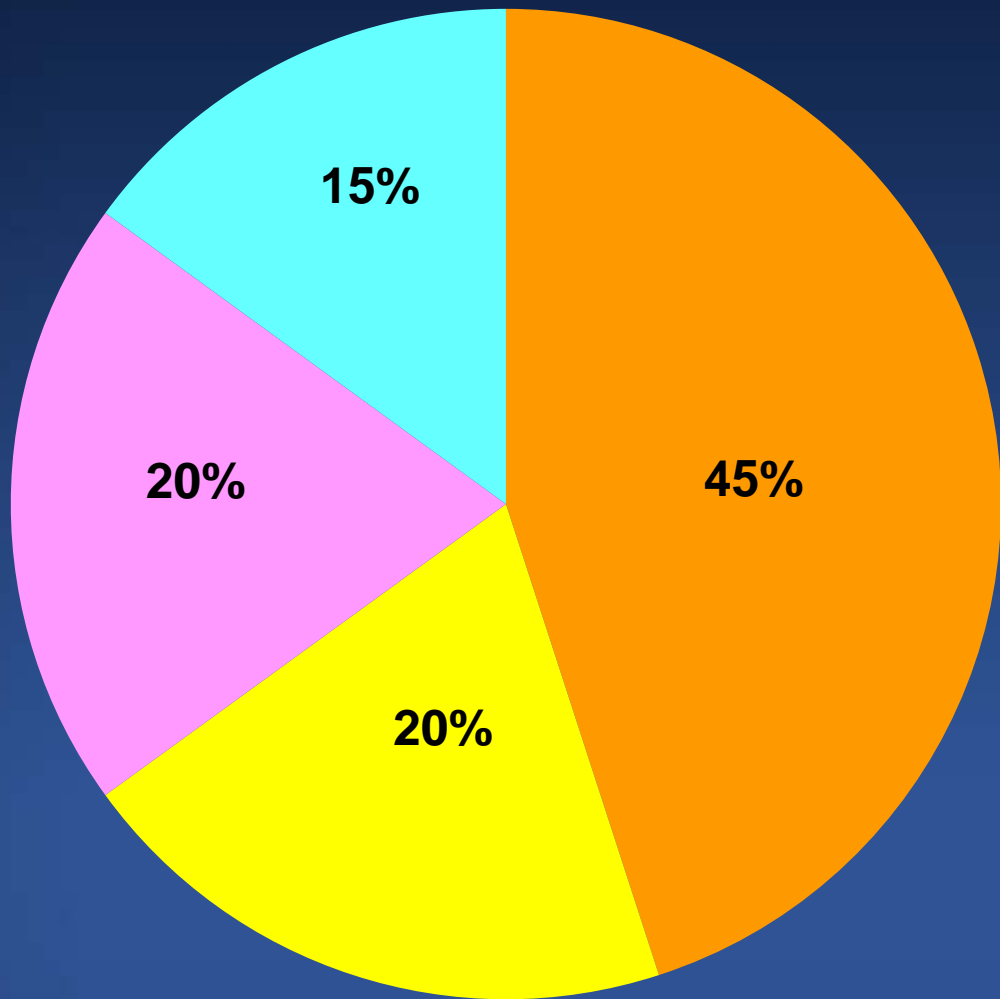
at The Time of Primary PCI

- **2013 ACCF/AHA Guideline**
  - **Noninfarct Artery PCI in STEMI Patients without Hemodynamic Instability (IIIb)**
- **2013 ESC Guideline**
  - **PCI should be limited to the culprit vessel except shock & persistent ischemia (IIaB)**



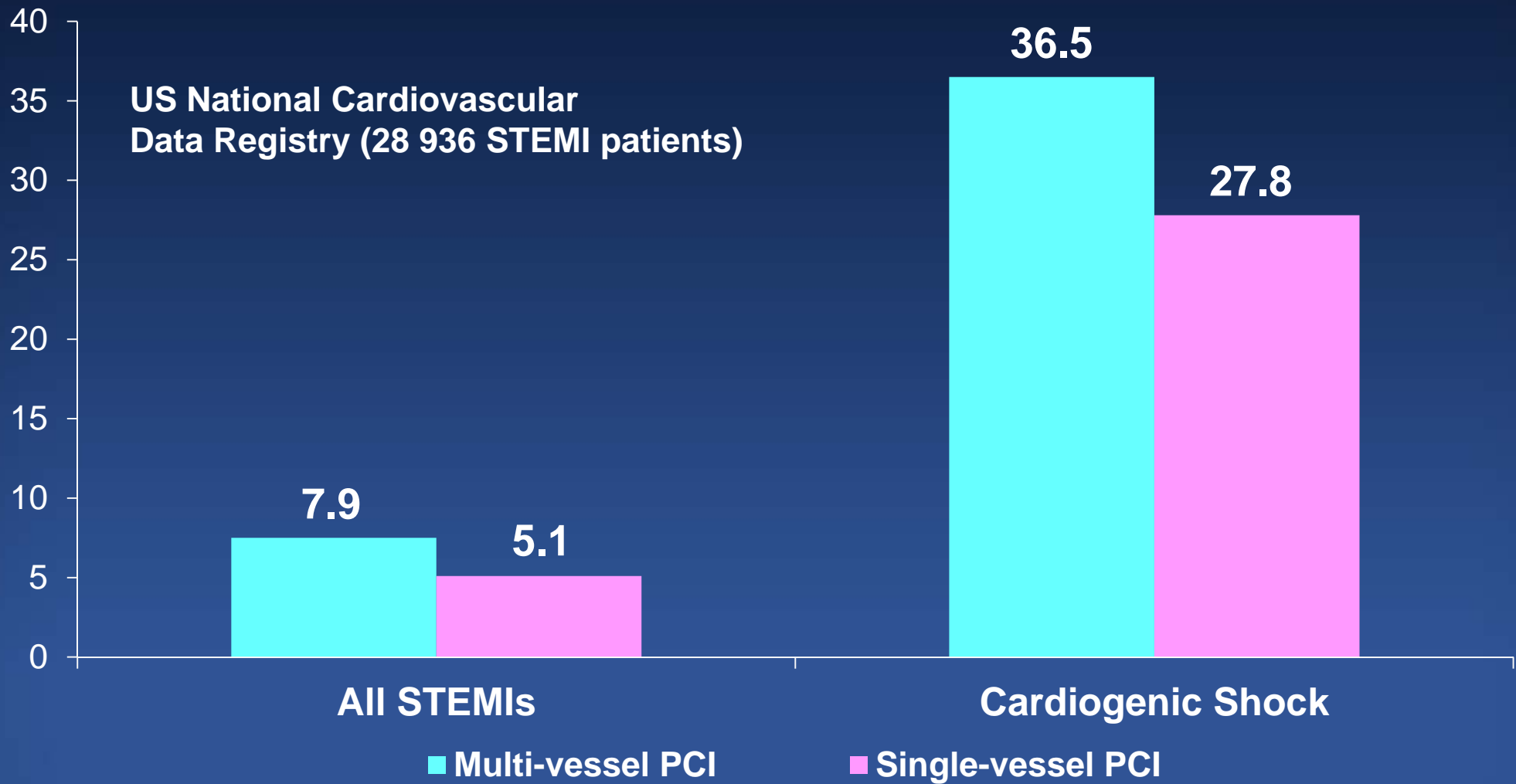
# Relative Proportion of Single vs. Multivessel Disease

Treatment strategies vary widely from an aggressive approach to a conservative approach.

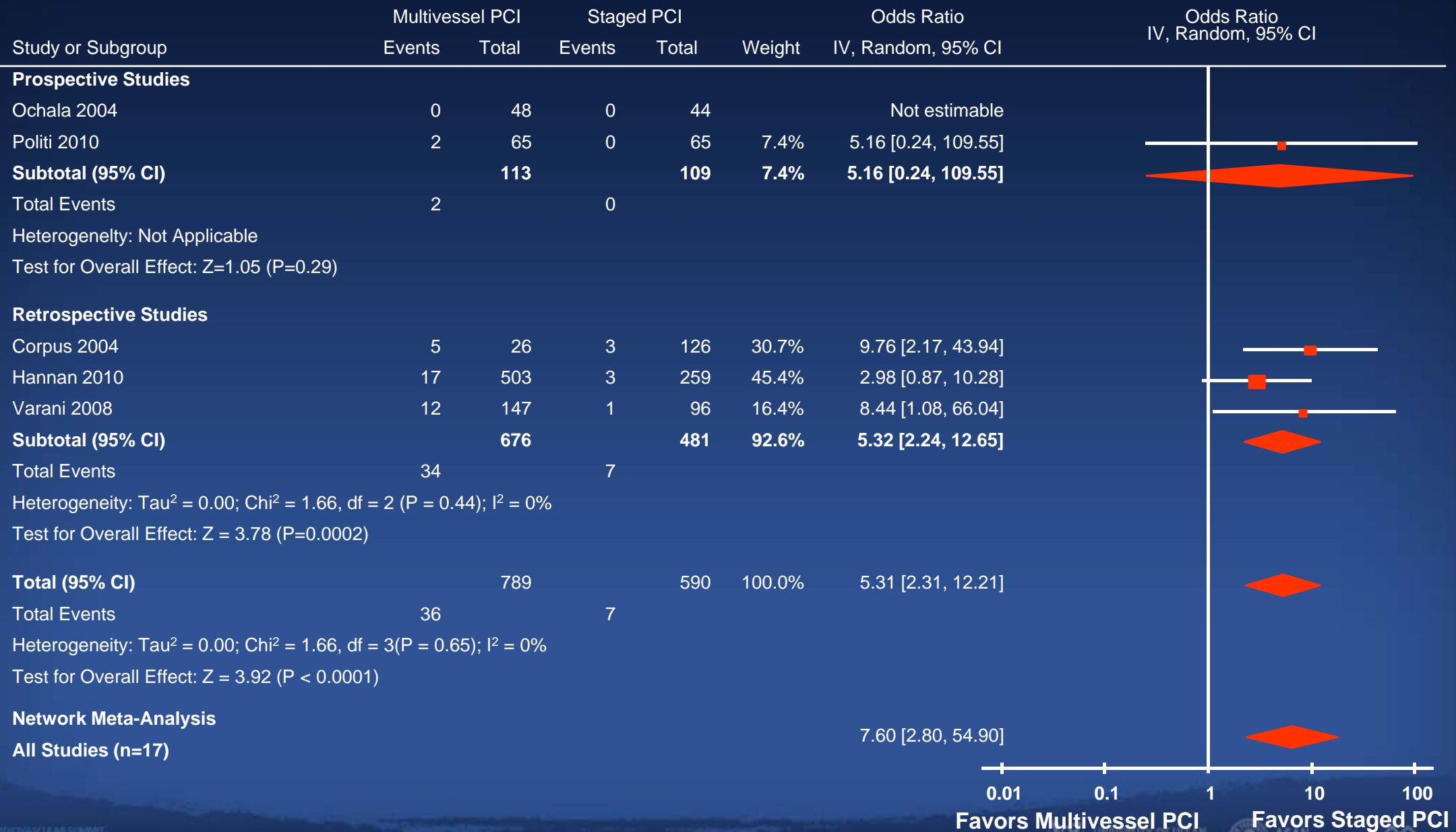


- Single-vessel disease
- Primary PCI of infarct-related artery only
- Primary multi-vessel PCI
- Staged PCI

# In-Hospital Mortality



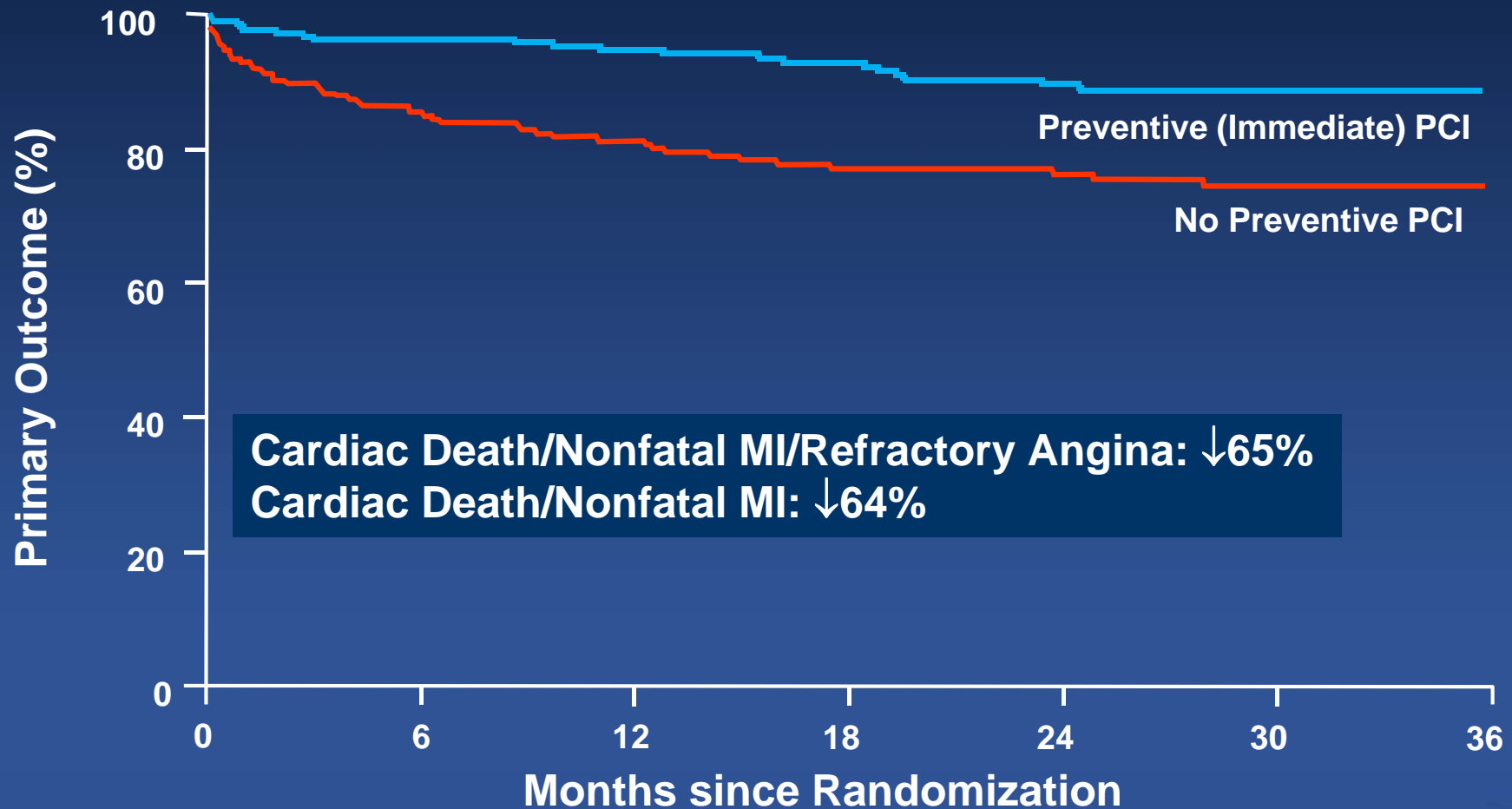
# Culprit PCI vs. Multivessel PCI Short-Term Mortality



# PRAMI Trial

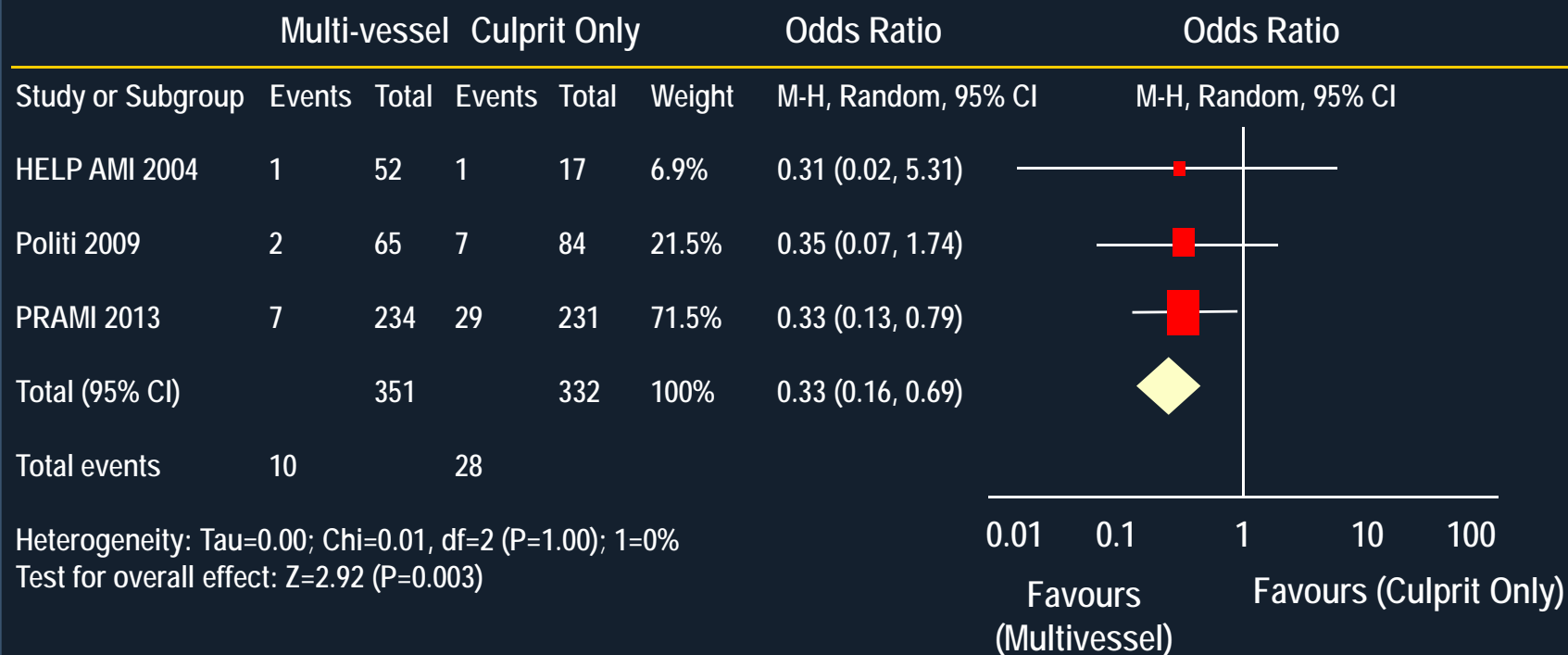
Preventive Angioplasty in AMI (STEMI)

Hazard ratio, 0.35 (95% CI, 0.21-0.58); P<0.001



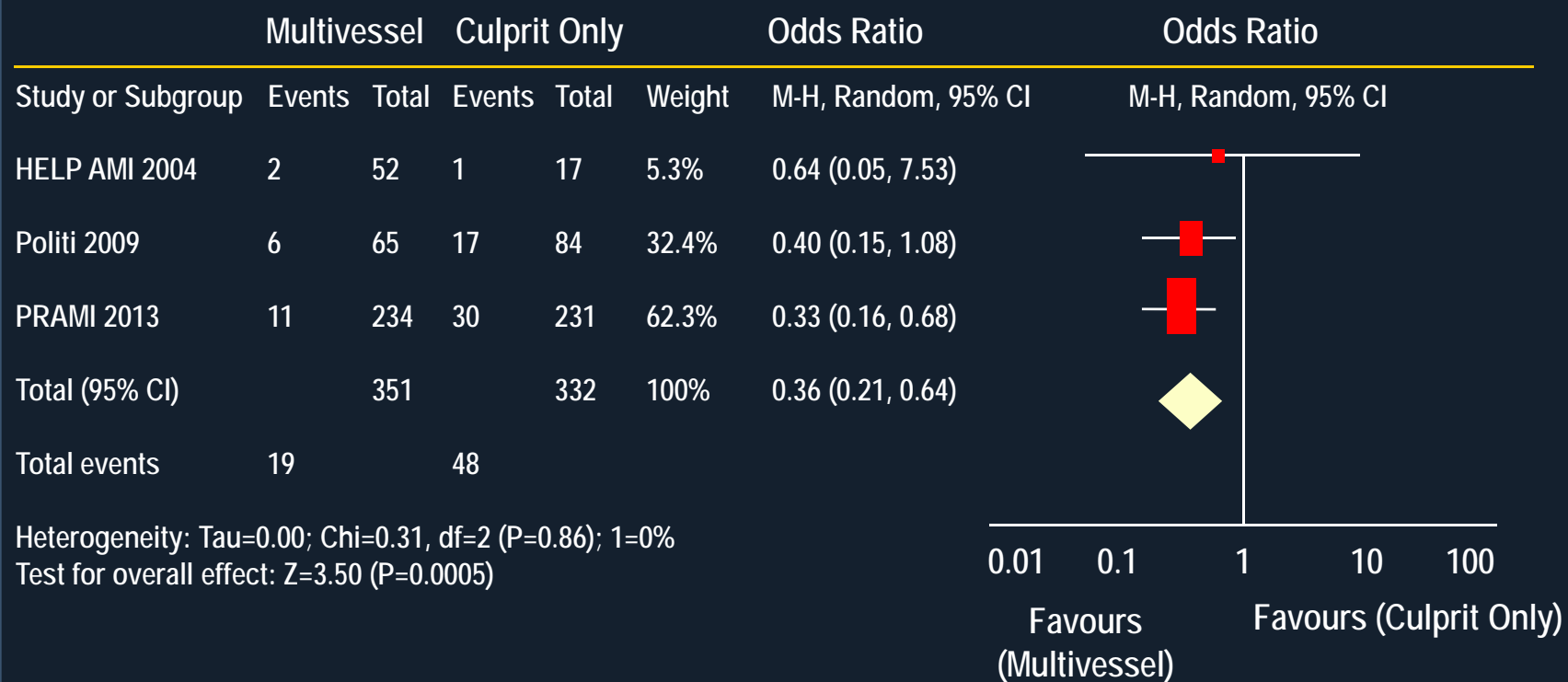
# Immediate MV PCI vs SV PCI for STEMI

## Major Adverse Cardiac Events (MACE)



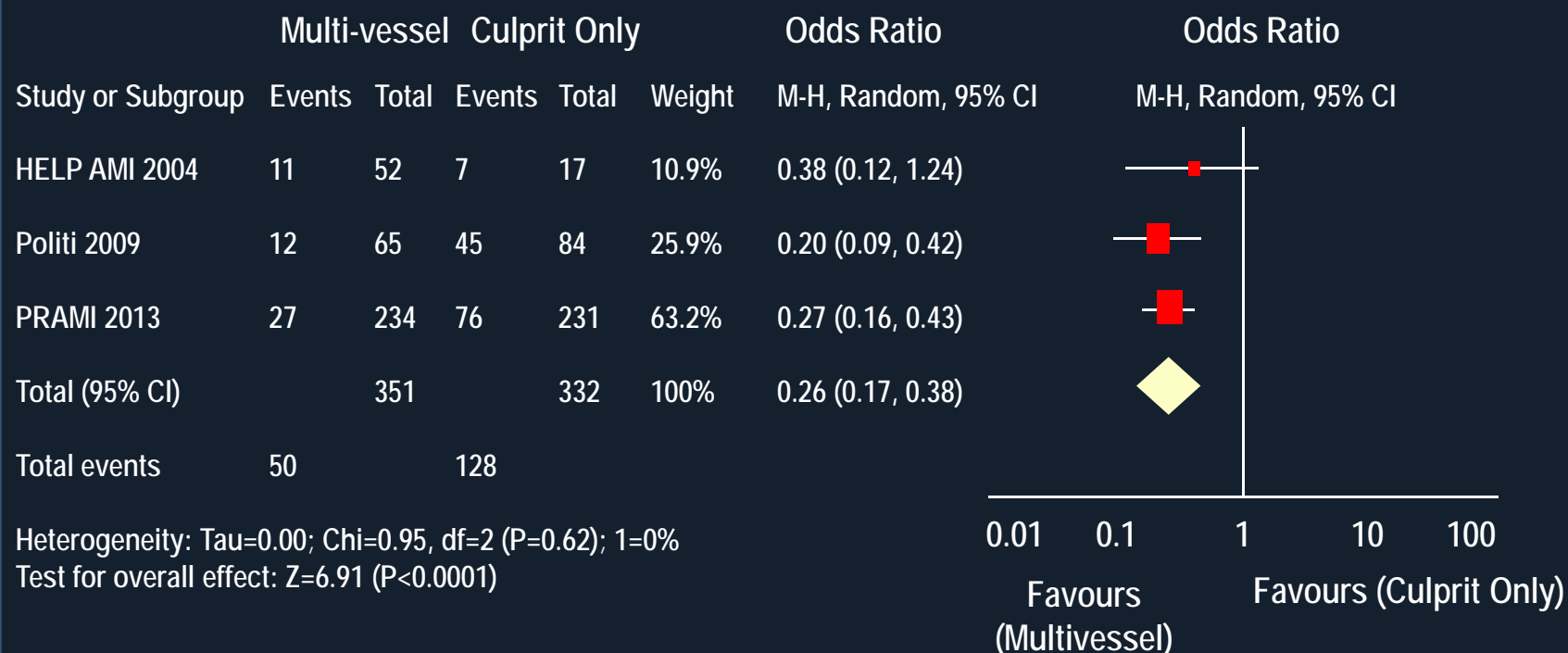
# Immediate MV PCI vs SV PCI for STEMI

## Primary outcome (Cardiac death + Myocardial Infarction)



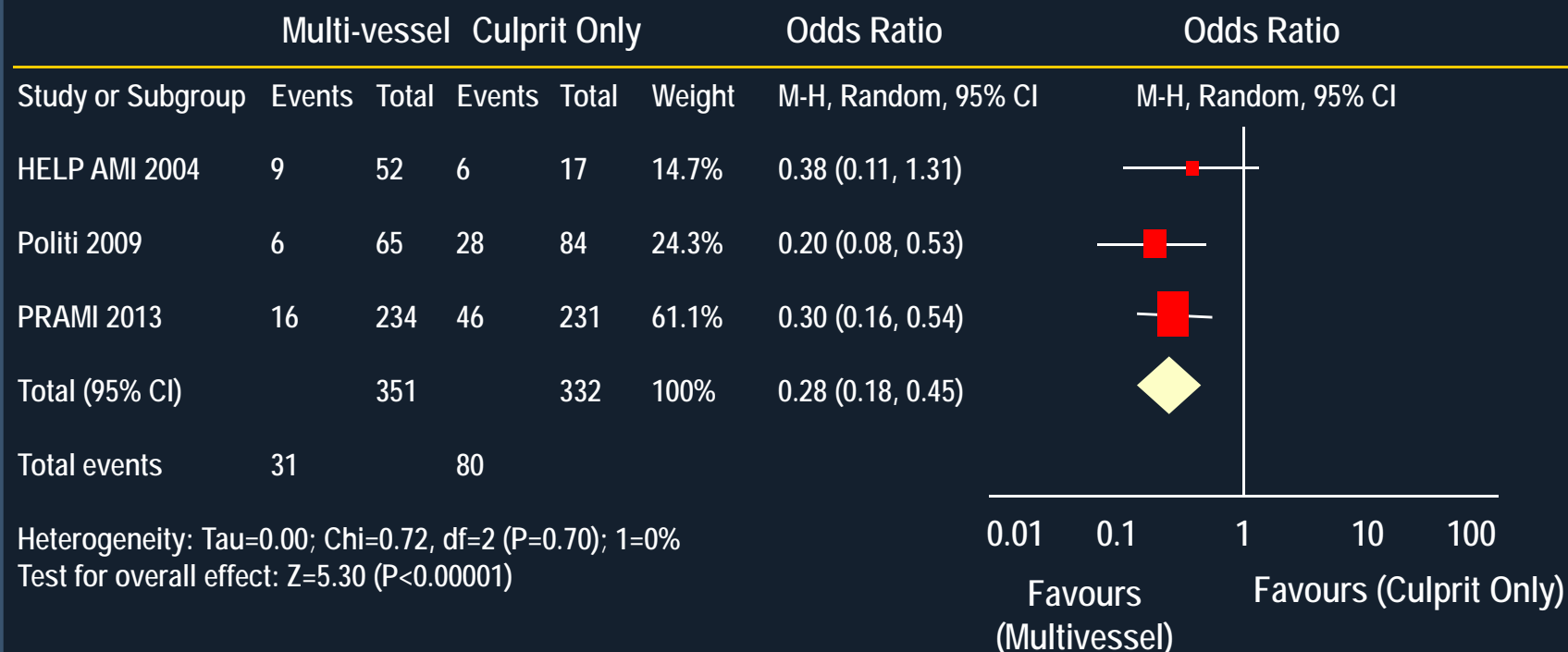
# Immediate MV PCI vs SV PCI for STEMI

## Myocardial Infarction



# Immediate MV PCI vs SV PCI for STEMI

## Repeat Revascularization





# Discussion

- **Thrombus Aspiration in STEMI**
  - TASTE Trial: Disappointing Results
  - Ongoing Trial: TOTAL Trial (n=10,700; NCT01149044)
  - Interpretation
- **Multivessel PCI in STEMI**
  - PRAMI Trial: Promising Results
  - Ongoing Trial: CULPRIT-SHOCK, COMPLETE Trials - Interpretation